

Sawn Hardwood F14, F17 Appearance Grade

Pacific Jarrah Non Bleed KD Hardwood

Kiln Dried Victorian Ash - F17 Hardwood

Hardwood Building Poles

9.1 Sawn Hardwood F14, F17 Appearance Grade

Unit Price : Unit = L.M.							
SIZE	F14 to 4.5m	F14 4.8 - 6.0m	F17 to 4.5m	F17 4.8 to 6.0m	F17 APP.GRADE to 4.5m	F17 APP.GRADE 4.8 - 6.0m	STOCKED at BRANCH
25 x 25	\$0.83		\$0.97				NON STOCK
38 x 38	\$2.43						NON STOCK
50 x 25	\$2.35		\$2.96	\$3.53	\$3.53	\$3.80	LONG RANDOM
50 x 38	\$3.63	\$4.22	\$4.41	\$5.10	\$5.40	\$5.90	NON STOCK
50 x 50	\$8.15	\$9.64	\$10.77	\$10.76	\$11.30	\$12.56	NON STOCK
75 x 25			\$4.41	\$4.71	\$5.10	\$5.35	LONG RANDOM
75 x 38	\$5.20	\$6.28	\$6.09	\$7.07	\$7.07	\$7.95	LONG RANDOM
75 x 50	\$6.89	\$8.06	\$7.95	\$9.24	\$9.33	\$10.51	3.6m,4.8m,6.0m
75 x 75	\$16.74	\$18.87	\$18.46	\$20.59	\$16.98	\$18.12	NON STOCK
100 x 25	\$5.10		\$5.90	\$6.28	\$6.77	\$7.11	LONG RANDOM
100 x 38	\$7.07	\$8.34	\$8.25	\$9.43	\$9.64	\$10.74	NON STOCK
100 x 50	\$9.24	\$10.90	\$10.69	\$12.56	\$12.56	\$14.10	3.6m,4.8m,6.0m
100 x 75	\$19.24	\$23.02	\$21.60	\$25.34	\$24.34	\$27.83	NON STOCK
100 x 100			\$35.34	\$40.84	\$39.27	\$44.24	2.4m and 3.0m
125 x 25			\$7.46	\$8.06	\$8.64		NON STOCK
125 x 38	\$9.82	\$10.69	\$11.30	\$12.18	\$13.17		NON STOCK
125 x 50	\$12.96	\$14.14	\$14.83	\$16.10	\$17.09	\$18.06	3.6m,4.8m,6.0m
125 x 75	\$22.87	\$25.34	\$25.73	\$28.48	\$29.27	\$31.38	NON STOCK
125 x 125	\$55.57		\$60.03		\$66.07		NON STOCK
150 x 25	\$7.77		\$8.87		\$10.31	\$10.76	4.8m, 6.0m
150 x 38	\$11.95	\$13.17	\$13.75	\$15.02	\$15.92	\$16.85	NON STOCK
150 x 50	\$15.62	\$17.28	\$17.97	\$19.64	\$20.72	\$22.17	3.6m,4.8m,6.0m
150 x 75	\$30.54	\$34.46	\$33.87	\$37.70	\$38.09	\$41.61	NON STOCK
150 x 100							NON STOCK
150 x 150					\$98.09		NON STOCK
175 x 25			\$11.59	\$12.77	\$13.26	\$14.16	NON STOCK
175 x 38	\$13.95	\$15.22	\$16.01	\$17.28	\$19.53	\$18.59	NON STOCK
175 x 50	\$20.42	\$22.87	\$23.08	\$25.53	\$28.48	\$27.12	3.6m,4.8m,6.0m
175 x 75	\$36.33	\$42.90	\$40.26	\$44.77	\$45.17		NON STOCK
200 x 25			\$13.26	\$14.74	\$15.13	\$16.32	4.8m, 6.0m
200 x 38	\$18.16	\$20.72	\$20.63	\$23.17	\$22.68	\$25.56	NON STOCK
200 x 50	\$25.14	\$27.30	\$28.18	\$30.45	\$31.89	\$33.69	3.6m,4.8m,6.0m
200 x 75	\$41.83	\$47.33	\$45.95	\$51.65	\$52.04	\$56.83	NON STOCK
200 x 100							NON STOCK
225 x 25	\$16.42	\$18.27		\$20.23	\$20.30		NON STOCK
225 x 38	\$21.60	\$23.86	\$24.55	\$26.52			NON STOCK
225 x 50	\$33.58	\$37.31	\$37.13	\$40.66	\$41.33	\$44.53	NON STOCK
225 x 75	\$52.62	\$59.39	\$57.73	\$64.70	\$64.22	\$70.33	NON STOCK
250 x 25	\$18.06	\$20.12	\$19.93	\$21.98	\$22.39	\$24.16	NON STOCK
250 x 38	\$28.48	\$31.23	\$31.33	\$33.98	\$35.05	\$37.37	1.0m, 1.2m
250 x 50			\$42.23	\$46.73	\$47.12	\$51.26	1.0m, 1.2m, 1.5, 2.4m, 3.6m, 4.8m
250 x 75	\$60.48	\$66.67	\$66.18	\$72.26	\$73.44	\$78.80	NON STOCK
275 x 38	\$32.20	\$34.95	\$35.34		\$40.15		NON STOCK
275 x 50	\$42.42	\$45.95		\$50.08	\$51.83	\$54.90	NON STOCK
300 x 25	\$23.17		\$25.73				NON STOCK
300 x 38	\$35.16	\$38.18	\$38.49	\$41.83	\$42.90	\$45.54	NON STOCK
300 x 50	\$46.24	\$50.17	\$50.75	\$54.58	\$58.82	\$62.22	NON STOCK
300 x 75	\$73.92						NON STOCK

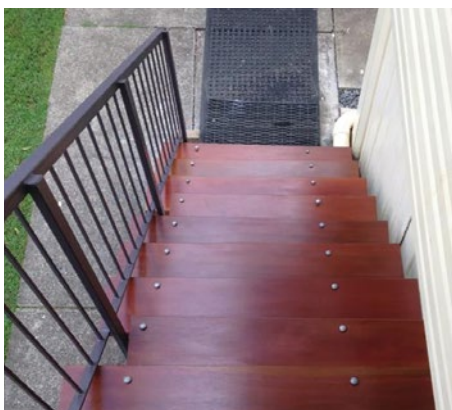
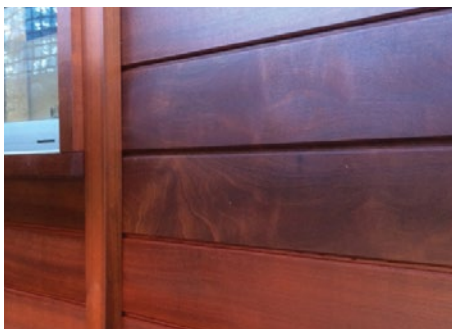
F14 - Structural Grade Only. F17 - Structural Grade Only.

F17 APPEARANCE GRADE - Structural Grade, Premium Hardwood species of high durability and low shrinkage properties.

APPEARANCE GRADE - P.O.A. **Note:** Dressed Hardwood - surcharge on Royal price - refer your Finlayson representative.



PACIFIC JARRAH NON BLEED KD HARDWOOD



BENEFITS:

- ❖ Durability Class 1
- ❖ Dressed Select Appearance Grade
- ❖ (100% Fsc Certified) Hardwood
- ❖ Non Bleed For External Application
- ❖ Structural F27 As2082
- ❖ Termite Resistant

Available in a large range of sizes and lengths for the following applications:

- ❖ Decking
- ❖ Treads
- ❖ Handrails
- ❖ Screening Posts
- ❖ Joists
- ❖ Bearers
- ❖ Rafters
- ❖ Beams

THICKNESS 35mm and 45mm DRESSED PENCIL ROUND

WIDTHS 90 / 120 / 140 / 170 / 190 / 220 / 240 / 285

LENGTHS 1.2 upto 6.9 METRES

STOCK RANGE	PRICE PER METRE
90 x 45	\$24.80
140 x 45	\$34.41
190 x 45	\$56.28
240 x 45	\$74.26

9.2 KD F27 Hardwood - Durability 1 & 2

SIZE (mm)	to 4.5m	4.8 - 6.0m	Stock
70 x 35	\$10.76	\$13.96	
90 x 35	\$14.34	\$18.62	
120 x 35	\$19.73	\$24.59	
170 x 35	\$31.79	\$38.42	
220 x 35	\$40.78	\$49.54	
240 x 35	\$43.97	\$59.33	
290 x 35	\$65.59	\$88.58	
70 x 45	\$14.98	\$19.31	3.0, 3.6, 4.8
90 x 45	\$21.30	\$26.52	3.0, 3.6, 4.8
120 x 45	\$26.91	\$33.55	
140 x 45	\$32.21	\$40.15	3.0, 3.6, 4.8
170 x 45	\$43.58	\$55.46	
190 x 45	\$49.52	\$61.34	3.6, 4.8
220 x 45	\$59.25	\$77.53	
240 x 45	\$67.71	\$83.46	
290 x 45	\$109.93	\$134.32	

PLEASE NOTE:

- This product may be plated.
- Shaded area indicates item stocked.
- Non-shaded products available to order.
- Please refer your Finlayson representative.

9.3 KD Vic Ash - F17 Hardwood

SIZE (mm)	up to 5.4m	5.7 - 7.2m
70 x 35	\$6.60	N/A
90 x 35	\$9.24	\$10.22
120 x 35	\$11.34	\$12.83
140 x 35	\$14.47	\$16.06
170 x 35	\$17.73	\$19.71
190 x 35	\$21.82	\$23.56
220 x 35	\$27.79	\$27.62
240 x 35	\$31.14	\$34.89
70 x 45	\$10.25	\$10.46
90 x 45	\$12.55	\$13.77
120 x 45	\$15.92	\$18.85
140 x 45	\$20.54	\$22.48
170 x 45	\$27.19	\$28.50
190 x 45	\$31.00	\$33.62
220 x 45	\$38.02	\$41.53
240 x 45	\$43.55	N/A

PLEASE NOTE:

- 70 and 90mm material is nail laminated.
- Not available in appearance grade.
- Suitable for internal applications only.
- Lead time on Vic Ash is normally 3 to 5 working days.
- Product may be plated.

9.4 Hardwood Building Poles

CCA Treated 100% Tested and Certified Price per metre				
Average Top Diameter (mm)	Length Range	Approx. Weight Kg/m	Standard Grade	Select Grade
150 to 200	Less Than 3.4m	33	\$39.24	\$46.07
200 to 250		53	\$54.70	\$64.23
250 to 300		77	\$76.09	\$89.16
300 to 350		106	\$112.09	\$131.10
150 to 200	3.5 to 6.4	39	\$42.80	\$50.53
200 to 250		60	\$58.27	\$68.98
250 to 300		85	\$80.27	\$93.94
300 to 350	6.5 to 9.4	115	\$118.00	\$138.20
150 to 200		45	\$50.83	\$59.71
200 to 250		67	\$75.19	\$88.56
250 to 300		94	\$102.26	\$119.48
300 to 350	9.5 to 10.9	125	\$126.64	\$149.23
200 to 250		71	POA	POA
250 to 300		98	POA	POA
300 to 350	11 to 12.4	130	POA	POA
200 to 250		75	POA	POA
250 to 300		103	POA	POA
300 to 350	12.5 to 13.9	136	POA	POA
200 to 250		79	POA	POA
250 to 300		108	POA	POA
300 to 350	14 to 15.5	141	POA	POA
200 to 250		83	POA	POA
250 to 300		112	POA	POA
300 to 350		146	POA	POA

PLEASE NOTE:

Quantities under 4 tonnes will incur a delivery surcharge. All timber is vacuum pressure impregnated with CCA. (R) preservative to hazard level 5 for inground contact in accordance with TUMA regulations. Hardwood rounds are all individually tested for compliance to statutory regulations. Heartwood durability class one rounds are available at 10% surcharge. Other sizes and lengths may be available on request. Poles will be supplied in increments of 3.0m. Site delivery P.O.A.

